

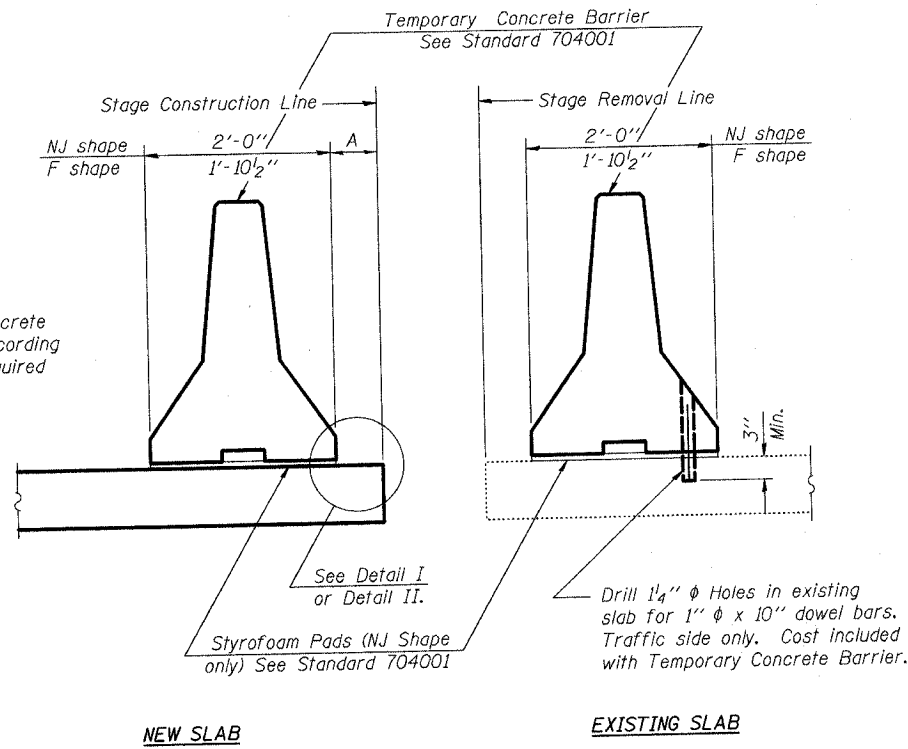
STATE OF ILLINOIS
DEPARTMENT OF TRANSPORTATION

ROUTE NO.	SECTION	COUNTY	SHEET	SHEET
F.A. 17	110 T-1	OGLE	39	25
FEDERAL ROAD DISTRICT NUMBER 7		ILLINOIS	FEDERAL AID PROJECT	

SHEET NO. 3
7 SHEETS

64416

When "A" is 3'-6" or less, the temporary concrete barrier shall be anchored to the new slab according to Detail I or Detail II. No anchorage is required when "A" is greater than 3'-6".



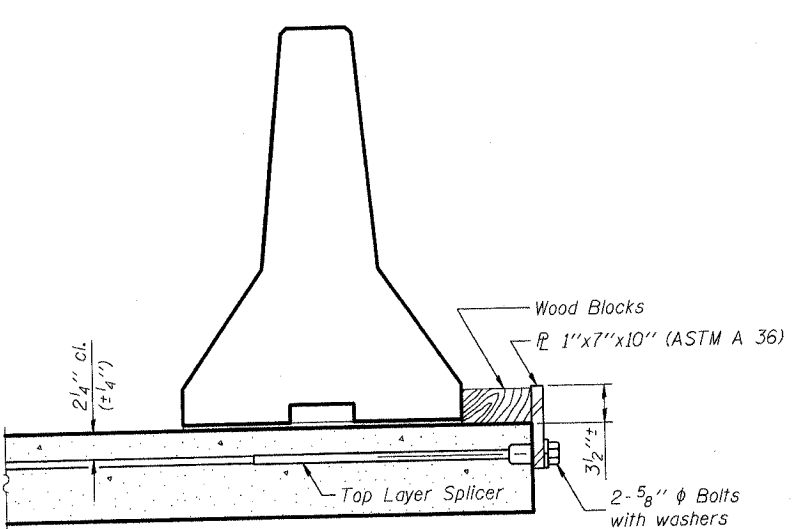
SECTIONS THRU SLAB

NOTES

Detail I - With Bar Splicer or Couplers:
Connect one (1) 1"x7"x10" steel PL to the top layer of couplers with 2-5/8" diameter bolts screwed to coupler at approximate center of each barrier panel.

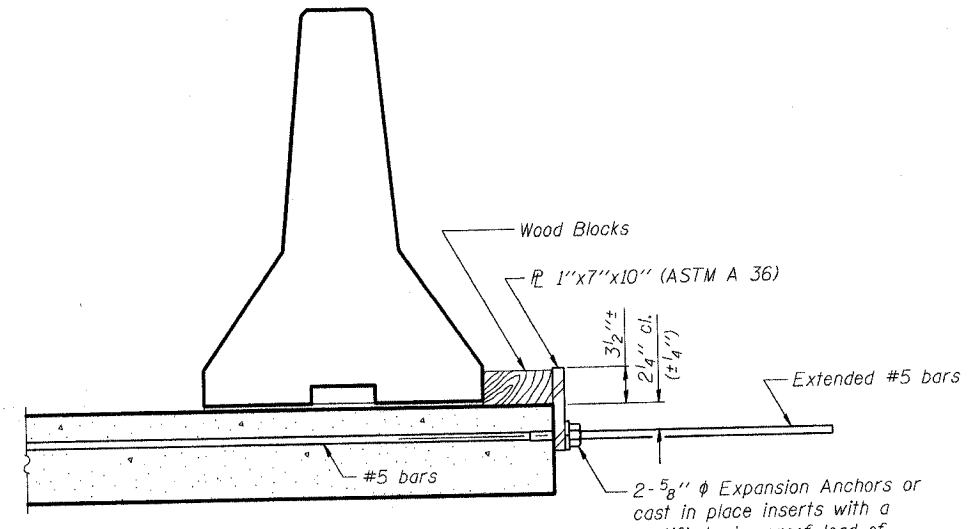
Detail II - With Extended Reinforcement Bars:
Connect one (1) 1"x7"x10" steel PL to the concrete slab with 2-5/8" diameter Expansion Anchors or cast in place inserts spaced between the top layer of reinforcement at approximate center of each barrier panel.

Cost of anchorage is included with Temporary Concrete Barrier.



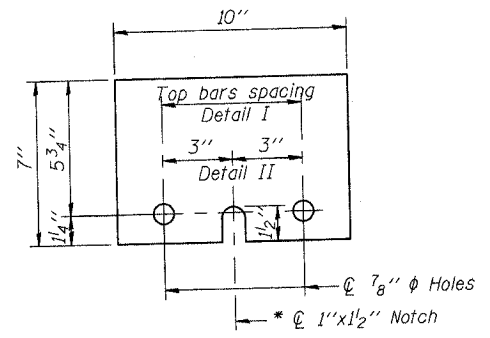
DETAIL I

The 1"x7"x10" Plate shall not be removed until Stage II Construction forms and reinforcement bars are in place.



DETAIL II

The 1"x7"x10" Plate shall not be removed until Stage II Construction forms and all reinforcement bars are in place and the concrete is ready to be placed.



PL 1"x7"x10"

* Required only with Detail II

DESIGNED	ADW
CHECKED	AJS
DRAWN	ADW
CHECKED	AJS

R-27 9-01-03

	ILLINOIS DEPARTMENT OF TRANSPORTATION TEMPORARY CONCRETE BARRIER ILLINOIS 64 OVER STREAM F.A. 17 SECTION 110 T-1 OGLE COUNTY STA. 172+38 STR. NO. 071-2025
	SCALE: NONE DATE: 05/27/2004